

SOKCHO, SOUTH KOREA

ILS RWY 26

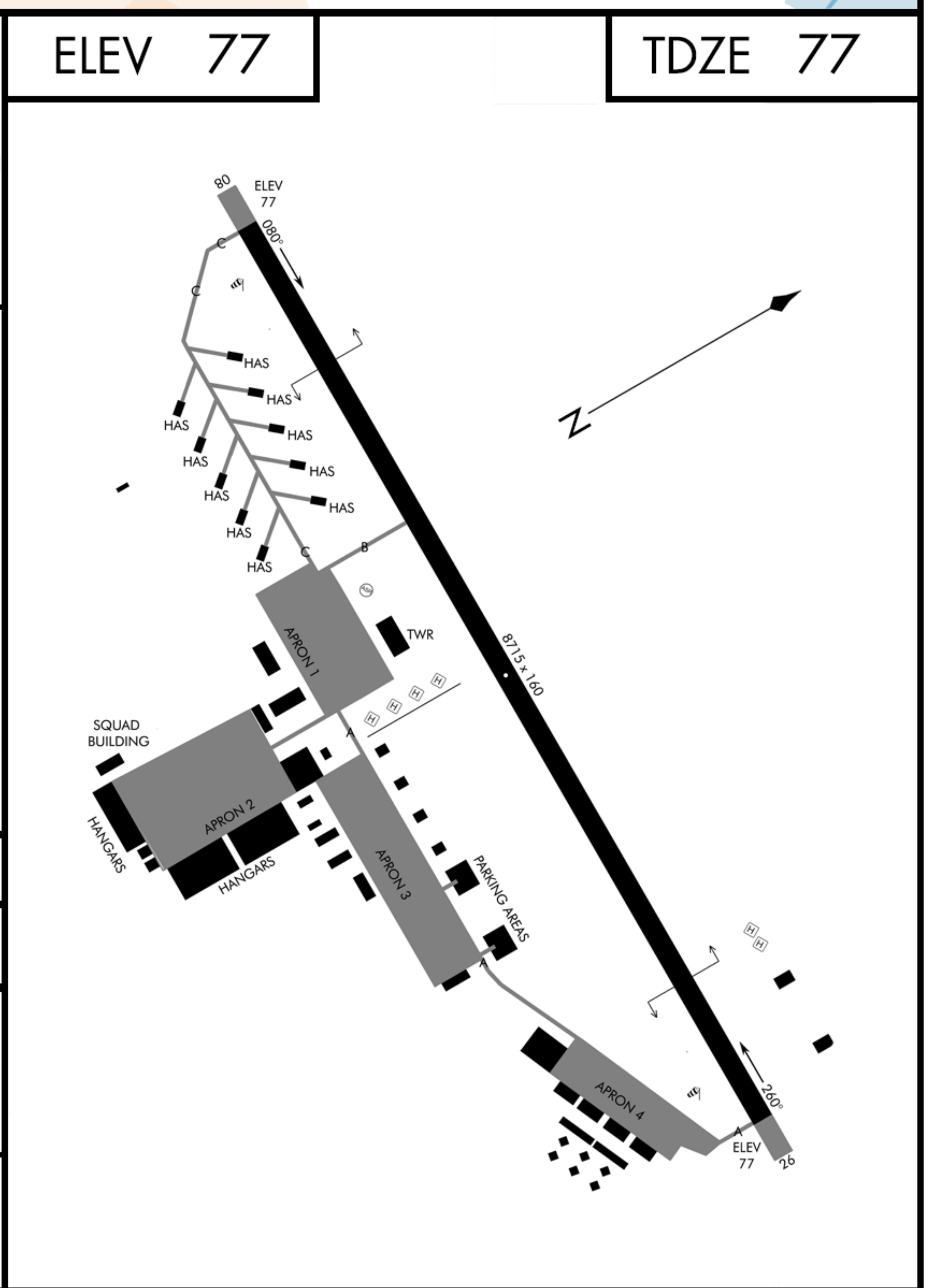
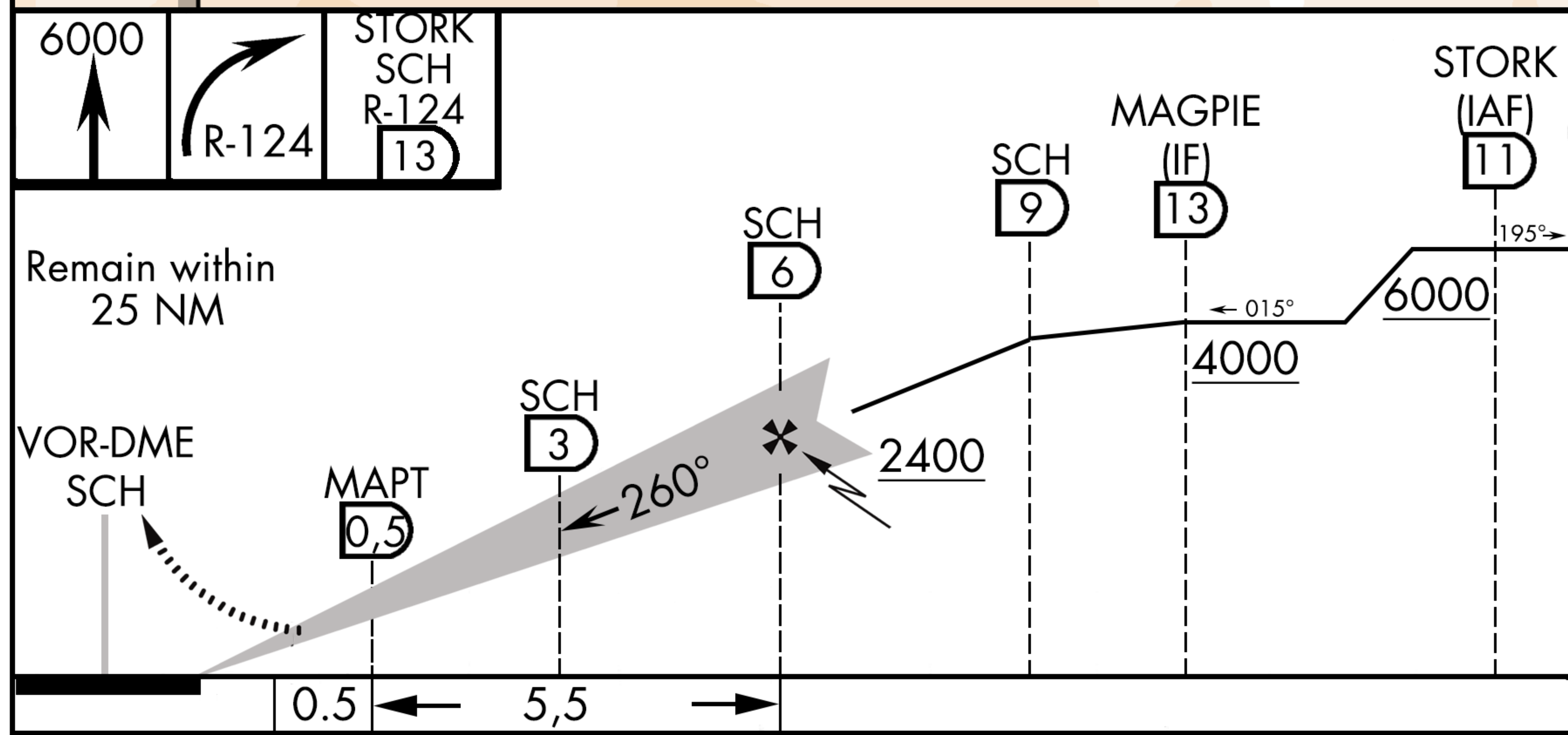
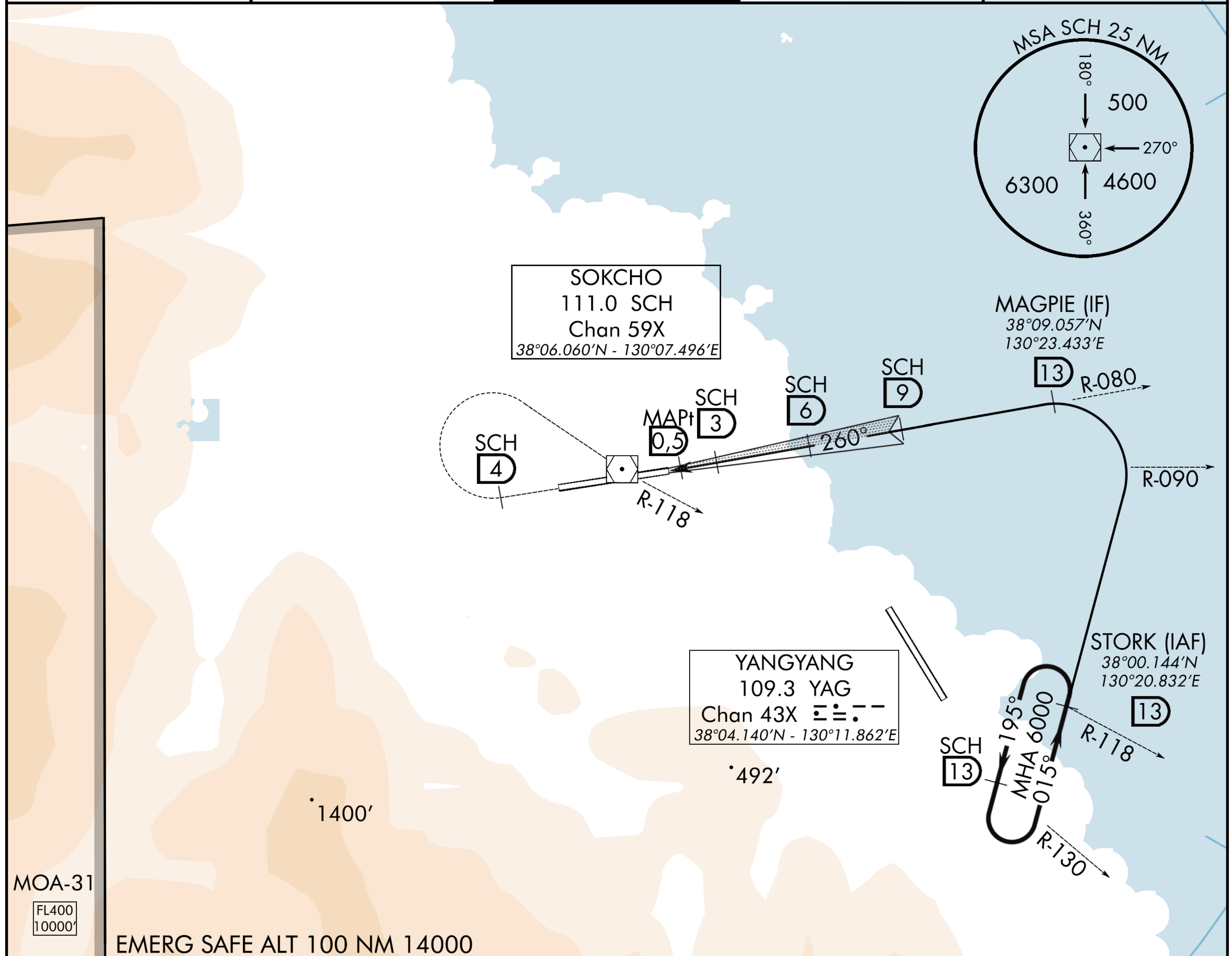
SOKCHO (RKND)

VOR-DME SCH 111.0 Chan 59X	APCH CRS 260°	Rwy ldg 15,000
		TDZE 77
		Arpt Elev 77

T * When ALS inop, increase CAT AB to 1 1/4 mile. CAT CD vis to 1 5/8 mile.
** Circling not authorized W of RWY 08-26.

ALSF-1 **†** MISSED APPROACH: Climb straight ahead to DME4.0 SCH. Turn right direct SCH. Climb 6000ft. Intercept R-118 SCH outbound to STORK. Hold as published at 6000ft.

ATIS 123.15	APP/DEP 304.4	TOWER 236.6 122.2	GND 240.4	BASE OPS 240.5
----------------	------------------	----------------------	--------------	-------------------



CATEGORY	C	D	E
S-ILS-26	277'(200' AGL) Vis: 200ft-800m	477'(400' AGL) Vis: 200ft-800m	477'(400' AGL) Vis: 200ft-800m
C CIRCLING **	977'(900' AGL) Vis: 200ft-1600m	1177'(1100' AGL) Vis: 200ft-1600m	1177'(1100' AGL) Vis: 200ft-1600m

SOKCHO, SOUTH KOREA 38°06.185'N - 130°07.622'E SOKCHO (RKND)

ILS RWY 26

NOT FOR REAL NAVIGATION - FALCON 4 BMS ONLY