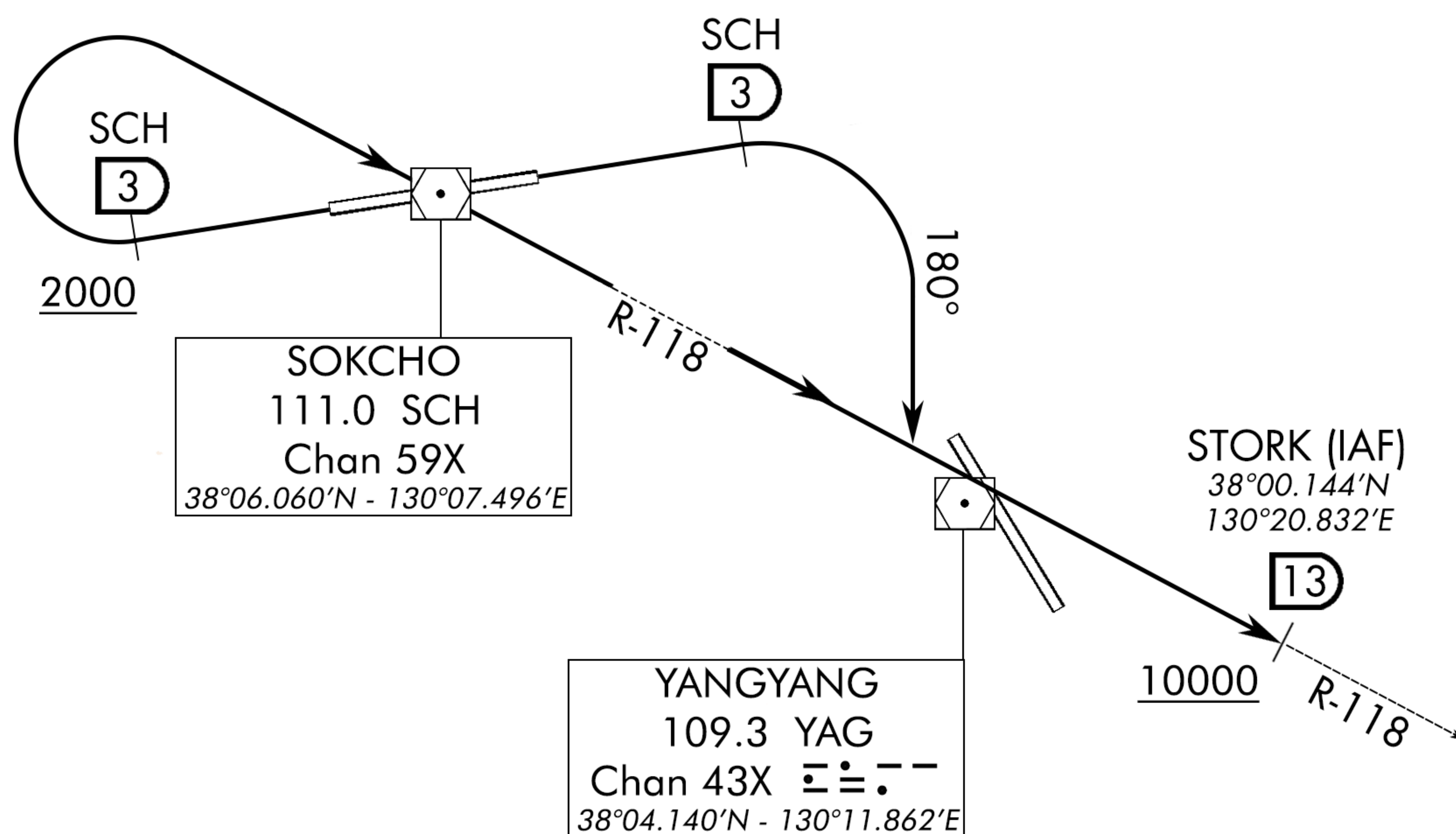
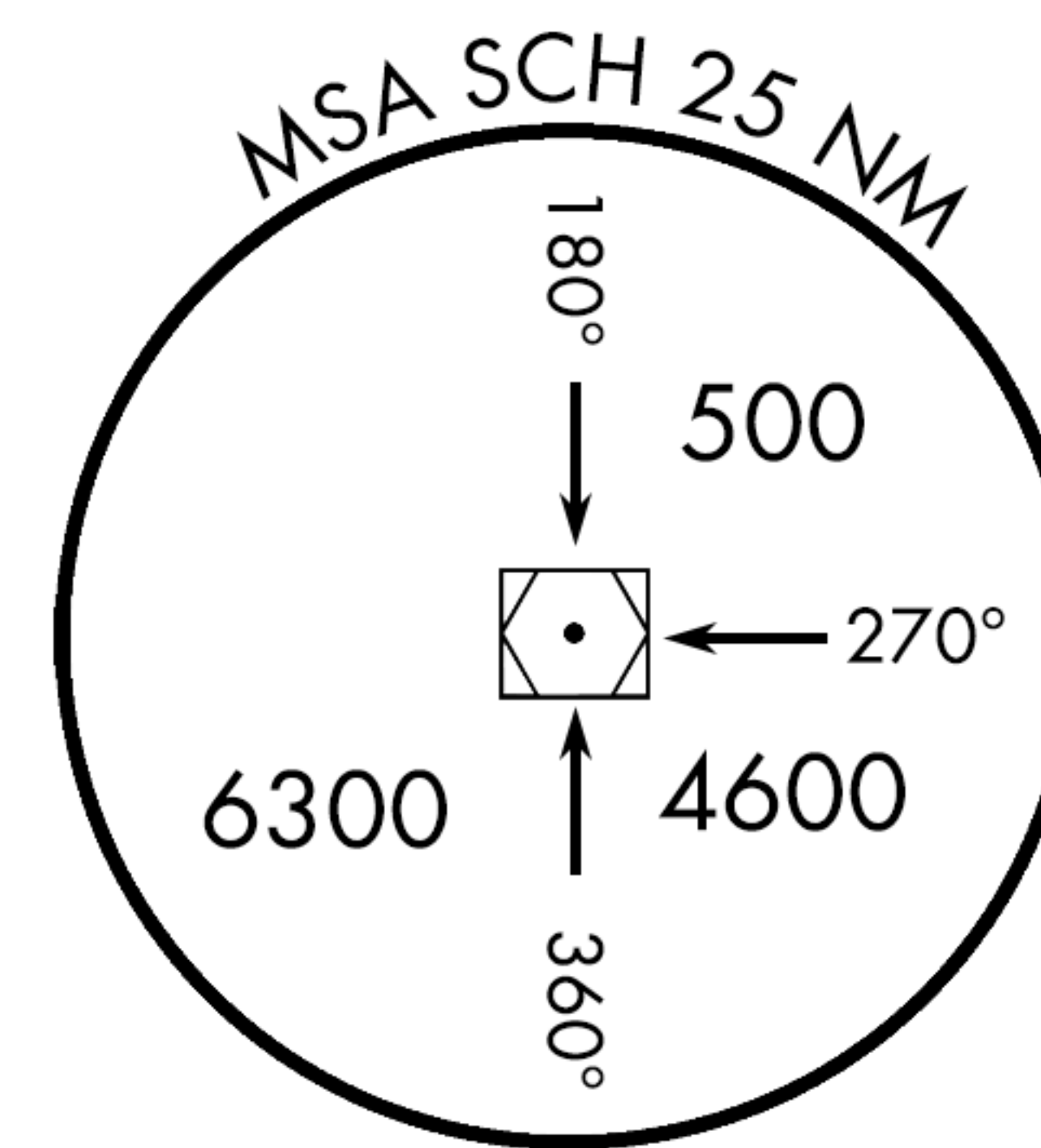


SOKCHO ONE DEPARTURE

ATIS 123.15
BASE OPS
240.5
GRD CON
240.4
SOKCHO TOWER
236.6 122.2
APP/DEP CON
304.4



MOA-31

FL400
10000'

DEPARTURE ROUTE DESCRIPTION

RWY 08:

Climb on RWY heading direct to SCH TACAN. At DME 3 SCH, turn right, track 180° to intercept R-118 SCH outbound SCH to STORK. Reach STORK at or above 10000. Thence...

RWY 26

Climb on Rwy heading until reaching DME 3 SCH. Cross at or above 2000. Turn right direct to SCH. Intercept R-118 outbound SCH and reach STORK at or above 10000. Thence...

SOKCHO ONE DEPARTURE