

SEOSAN, SOUTH KOREA

ILS/DME or LOC/DME RWY 21L

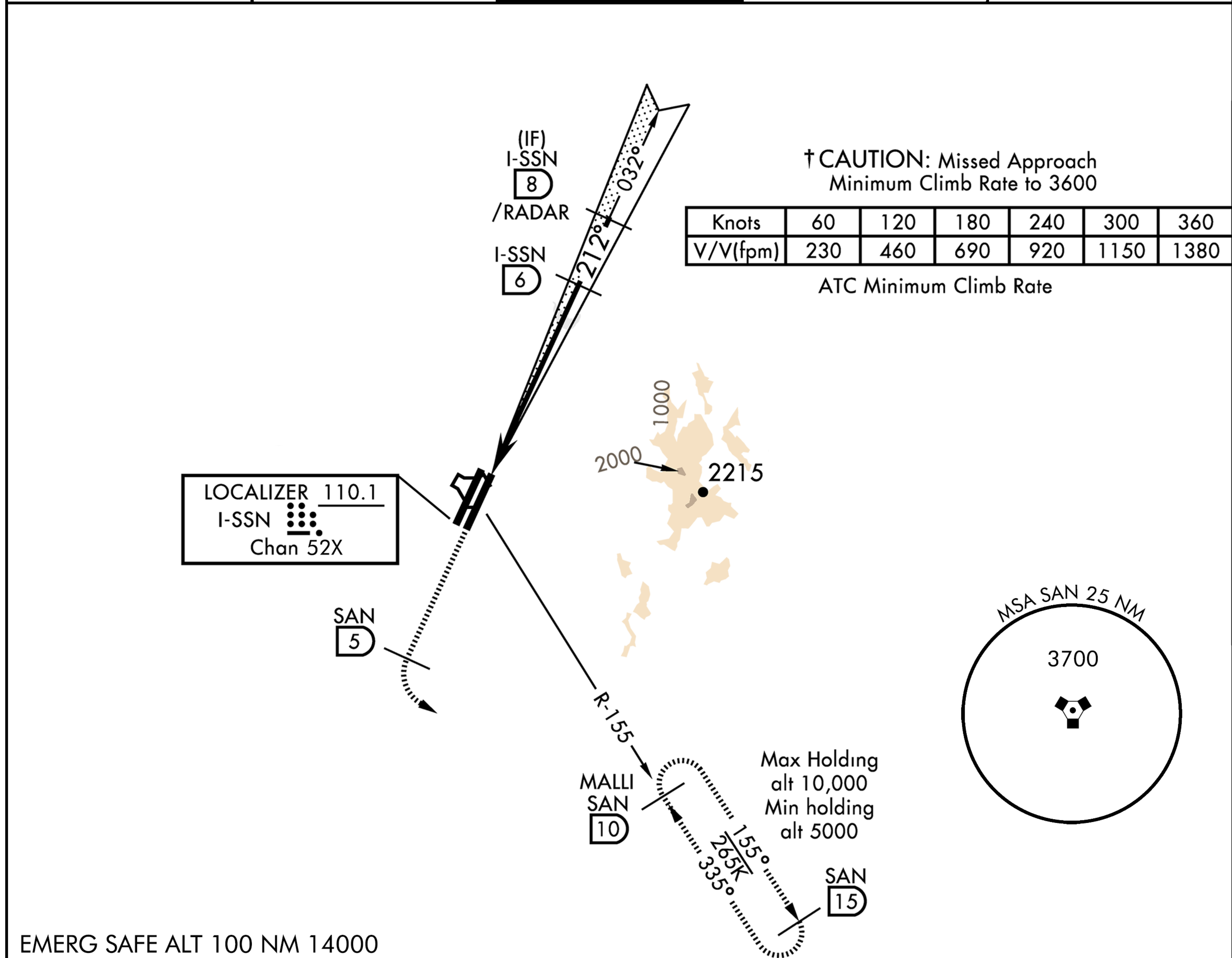
SEOSAN (RKTP)

LOC/DME I-SSN 110.1 Chan 52X	APCH CRS 212°	Rwy ldg 9,000 TDZE 26 Arpt Elev 26
------------------------------------	------------------	--

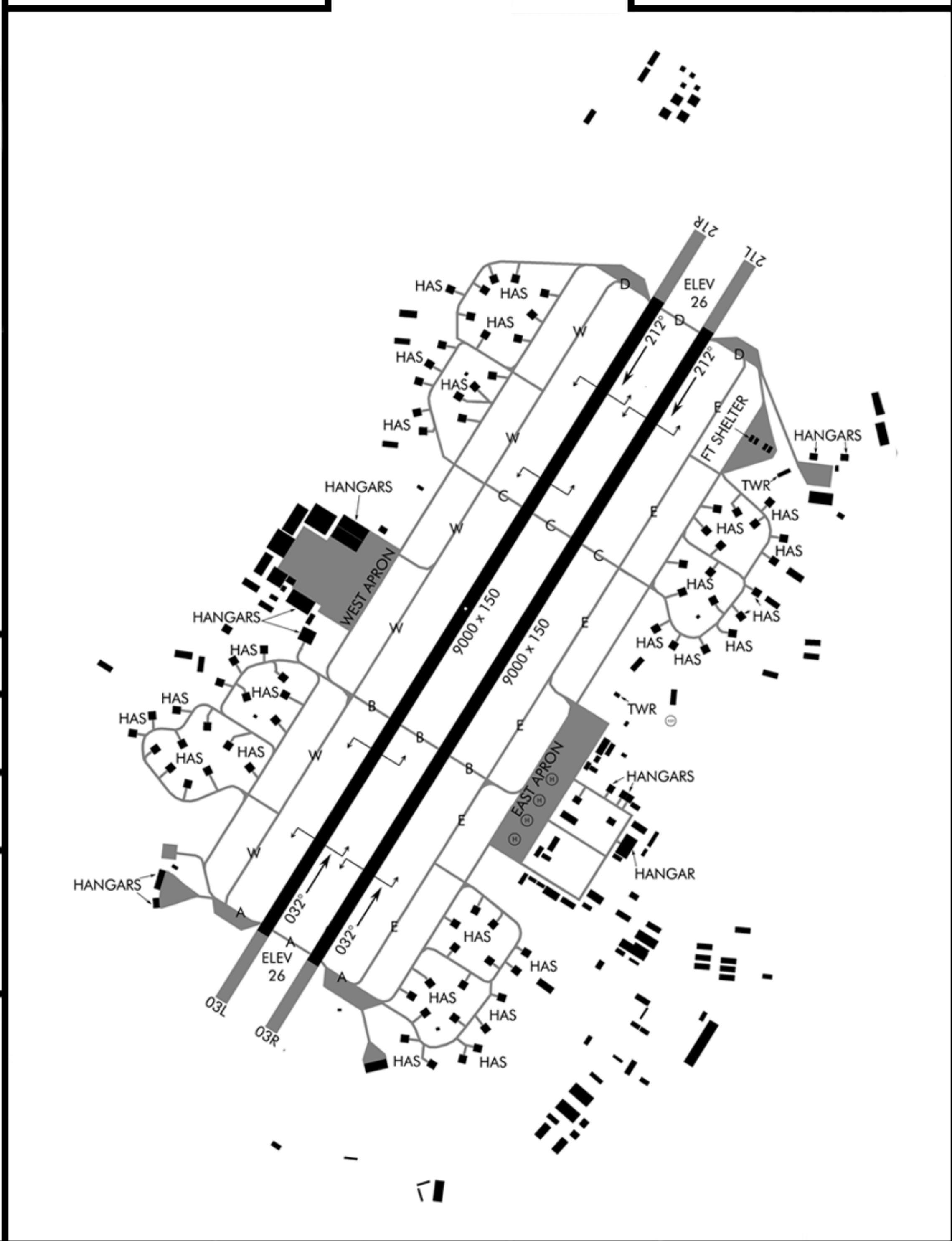
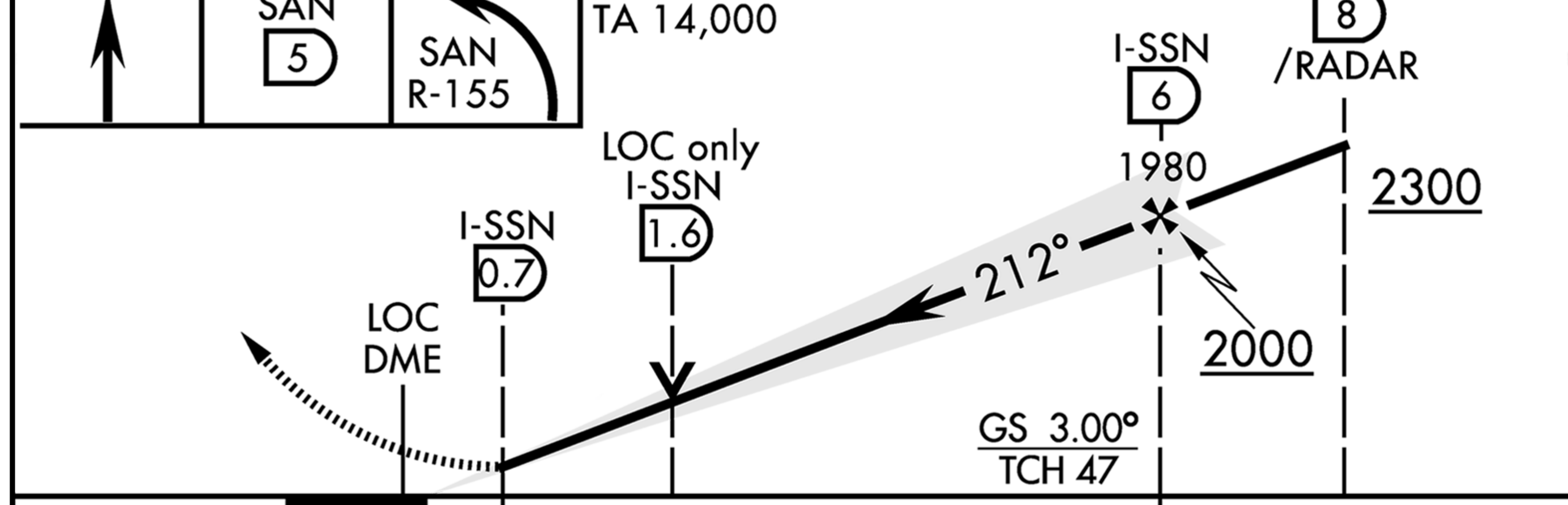
T * When ALS inop, increase RVR to 40 and vis 3/4 miles.
** Circling to NORTHWEST side of RWY only.

ALSF-1 **†** MISSED APPROACH: Climb to 5000 to SAN TACAN 5 DME, then direct to SAN R-155/10DME (MALLI) and hold.

ATIS 130.3	APP/DEP 253.95	TOWER 353.1 126.75	GND 275.8	BASE OPS 318.1
---------------	-------------------	-----------------------	--------------	-------------------



EMERG SAFE ALT 100 NM 14000



CATEGORY	A	B	C	D	E
S-ILS 21L *	241/24		200	(200-½)	
S-LOC 21L **	540/24	499 (500-½)	540/40 499 (500-¾)	540/50 499 (500-1)	540/60 499(500-1¼)
CIRCLING	540-1	498 (500-1)	600-1½ 558 (600-1½)	820-2½ 778 (800-2½)	1840-3 1798 (1800-3)

SEOSAN, SOUTH KOREA

N 36°41.807' E 127°19.884

SEOSAN (RKTP)

ILS/DME or LOC/DME RWY 21L

NOT FOR REAL NAVIGATION - FALCON 4 BMS ONLY