

ILS RWY 03R

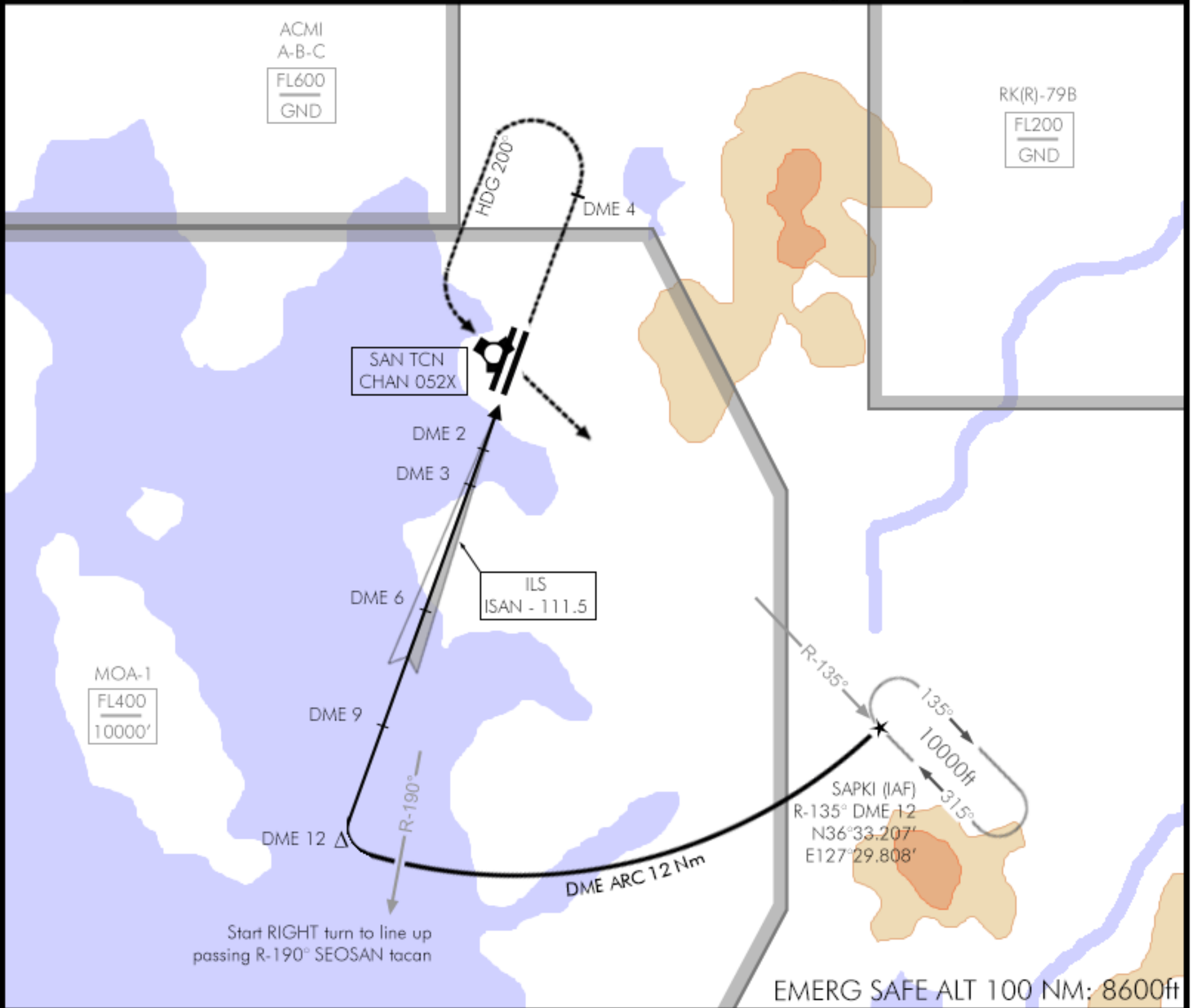
Update: 12JAN22

SEOSAN / HAEMI (RKTP)
SOUTH KOREA

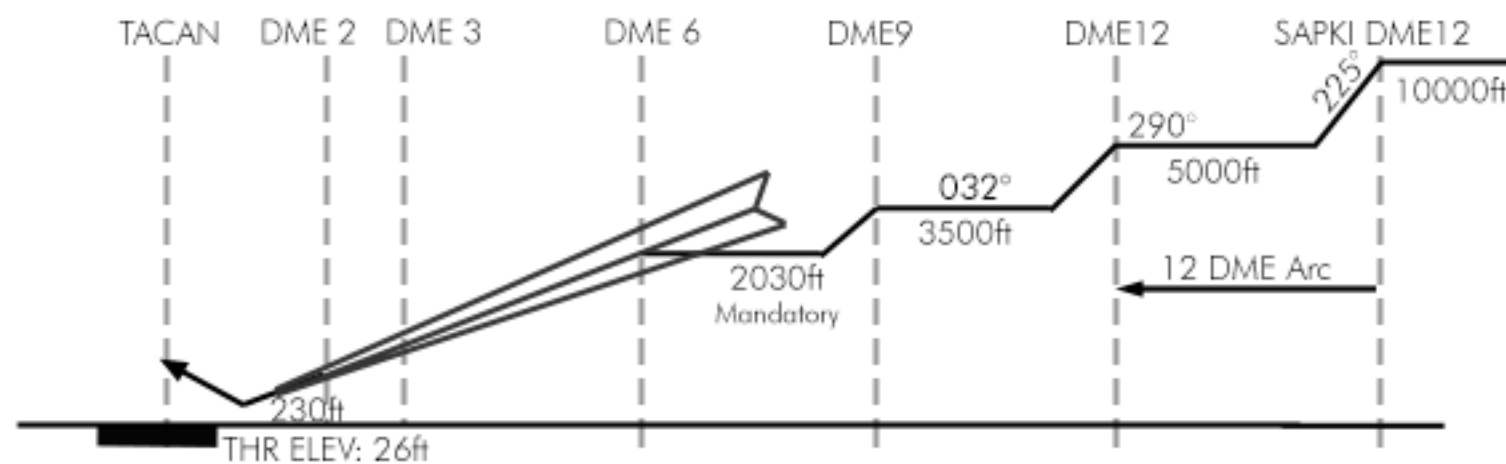
TCN:	ATIS:	APP/DEP:	TWR:	ILS:	ILS DA(H):	LOC:	GPS:	ELEV:
52X	130.3	253.95	353.1	111.5	230' (204' AGL)	032°	N36°41.807' E127°19.884'	026'



MISSED APPROACH: Climb straight ahead to 3000ft until reaching DME4. Then LEFT climbing turn to 5000ft hdg 200° until intercepting R-315° inbound SAN tcn. Track R-135° outbound & hold at SAPKI.



Transition Level : FL 140 - Transition Altitude : 14000ft



MINIMA:

ILS: 230'(204'AGL)
Vis: 210ft-800m*

LOC: 450'(424' AGL)
Vis: 450ft-1600m**

Circling: 880'(854'AGL)
Vis: 900ft-2000m

*When ALS inop, increase vis to 1200m
**When ALS inop, increase vis to 2000m

ILS RWY 03R

NOT FOR REAL NAVIGATION - FALCON 4 BMS ONLY

SEOSAN / HAEMI (RKTP)
SOUTH KOREA