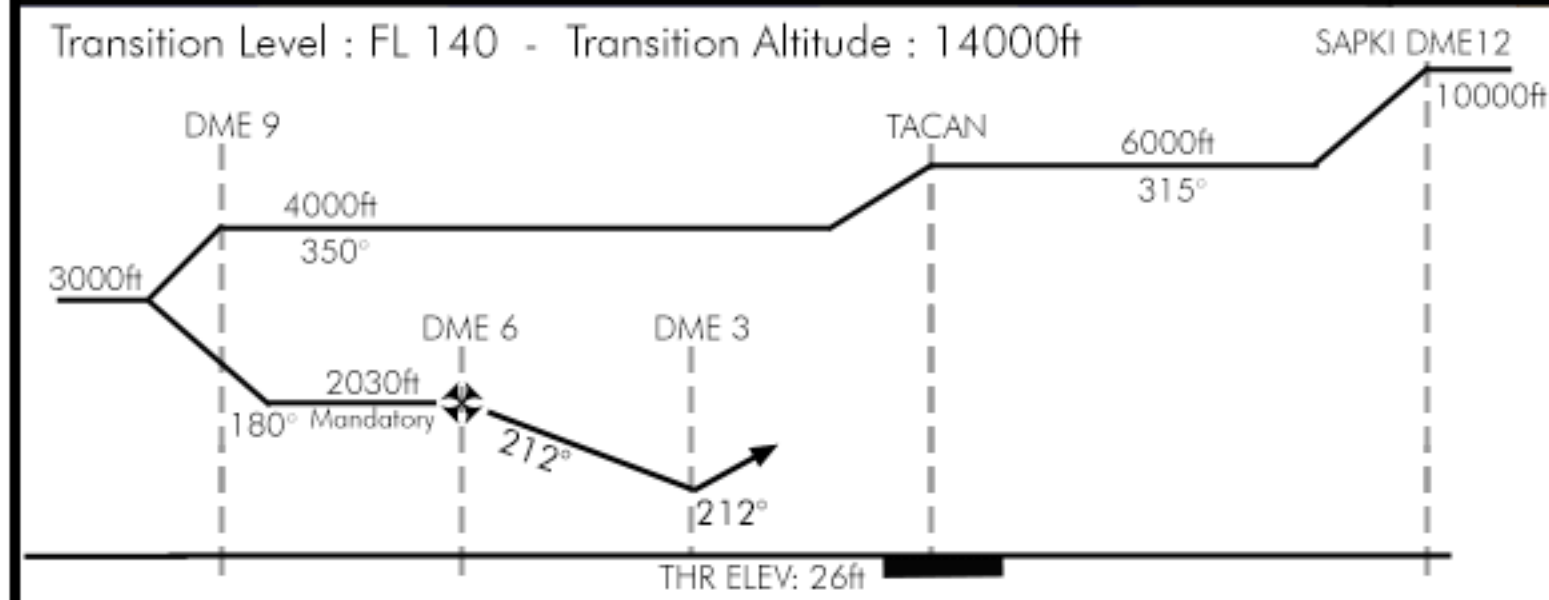
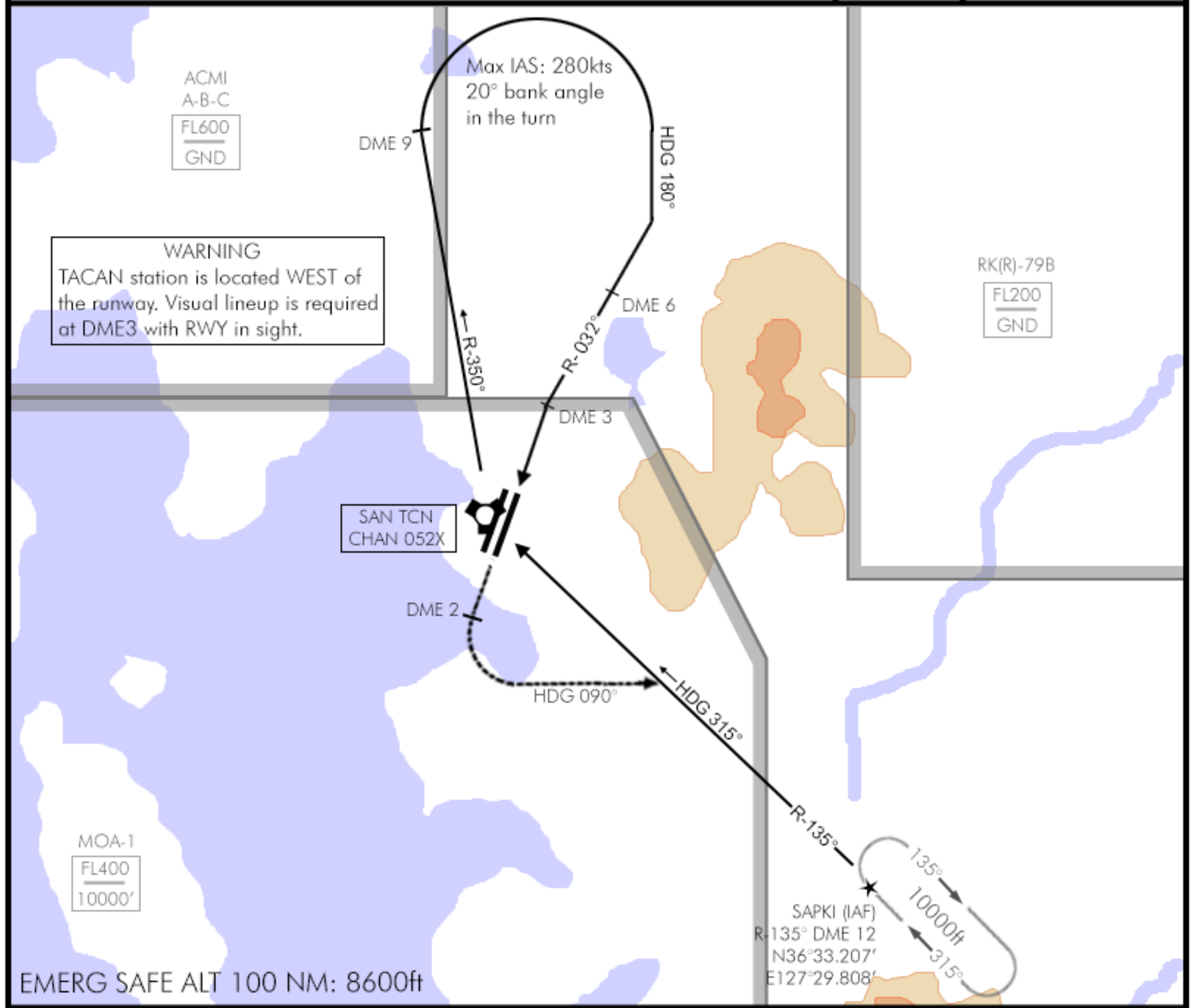


HI TACAN RWY 21R

Update: 12JAN22

SEOSAN / HAEMI (RKTP)
SOUTH KOREA

TCN: 52X	ATIS: 130.3	APP/DEP: 253.95	TWR: 353.1	TCN DA(H): 730' (704' AGL)	APP CRS: 212° R-032	GPS: N36°41.807' E127°19.884'	ELEV: 026'	
<p>MISSED APPROACH: Climb straight ahead to DME2. Then LEFT climbing turn to 5000ft hdg 090° until intercepting R-135° Seosan Tacan outbound. Hold at SAPKI as published (10.000ft)</p>								



MINIMA:

TACAN: 730' (704' AGL)
Vis: 710ft-1600m*
at DME 2

Circling: 930' (904' AGL)
Vis: 910ft-2000m
*When ALS inop, increase vis to 2000m

© BENCHMARK SIMS