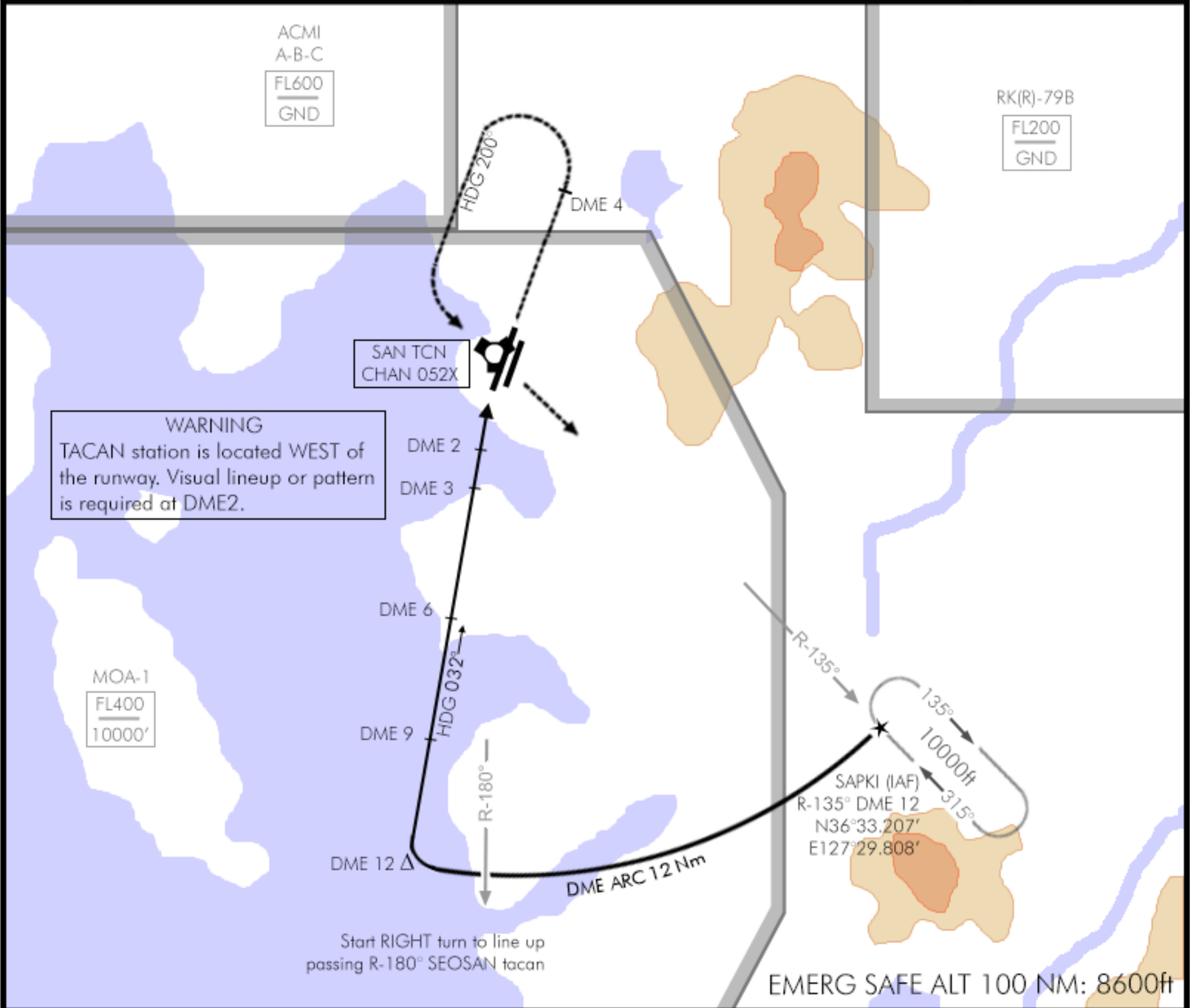


TCN:	ATIS:	APP/DEP:	TWR:	TCN DA(H):	APP CRS:	GPS:	ELEV:
52X	130.3	253.95	353.1	740' (714' AGL)	032° R-212	N36°41.807' E127°19.884'	026'



MISSED APPROACH: Climb straight ahead to 3000ft until reaching DME4. Then LEFT climbing turn to 5000ft hdg 200° until intercepting R-135° Seosan Tacan Outbound. Hold at SAPKI as published.



Transition Level : FL 140 - Transition Altitude : 14000ft

MINIMA:

TACAN: 740'(714'AGL)
Vis: 750ft-1600m*
at DME 2

Circling: 930'(904'AGL)
Vis: 900ft-2000m
*When ALS inop, increase vis to 2000m

