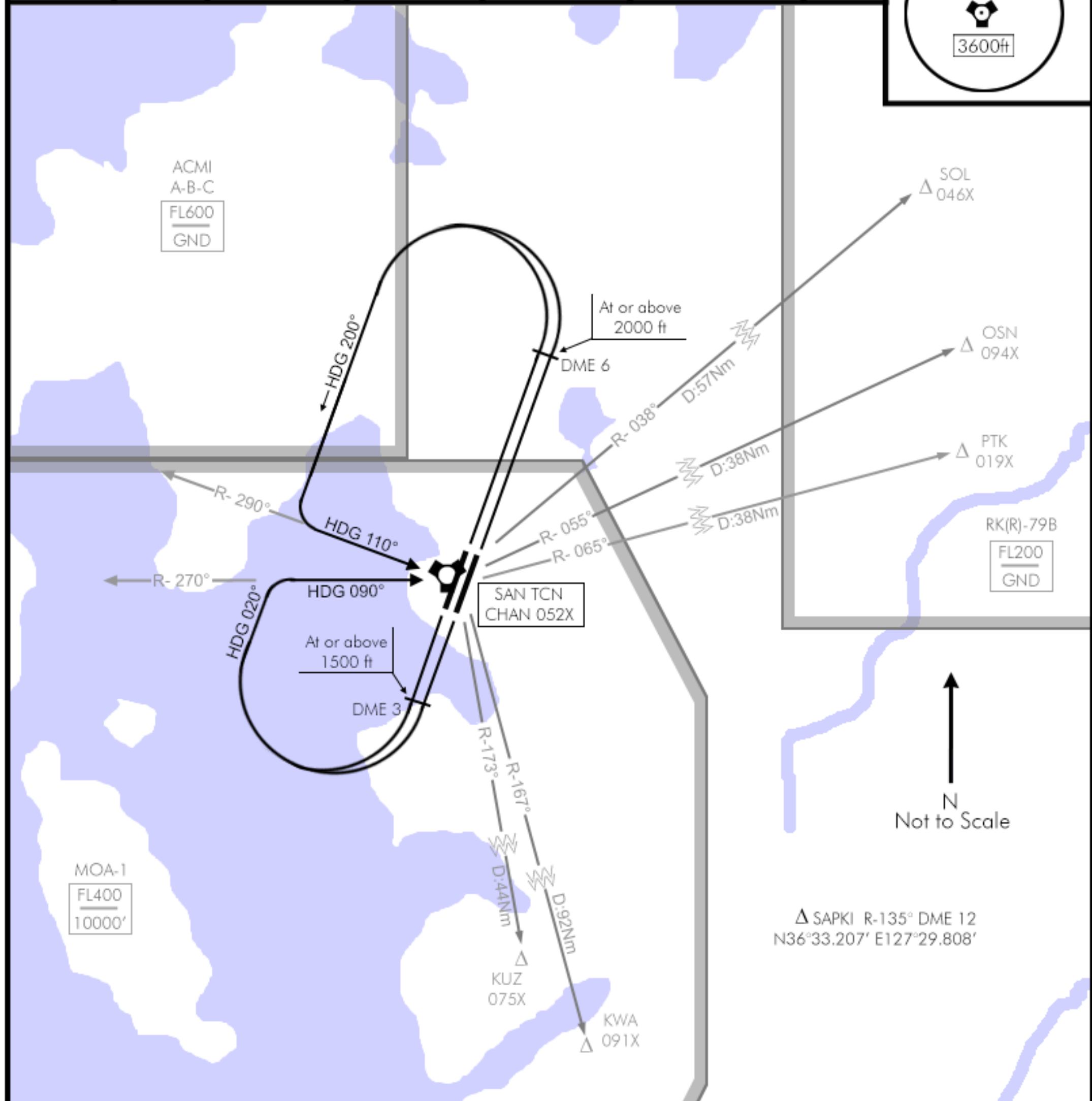
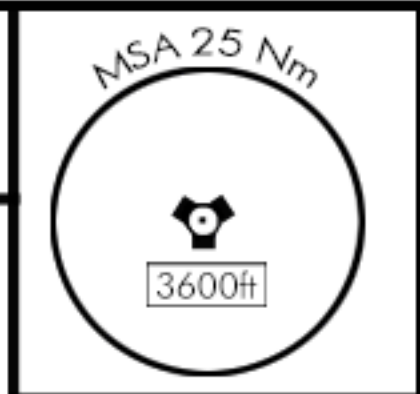


TACAN:	TWR:	APP/DEP:	TRANS LVL:	TRANS ALT:	GPS:	ELEV:
052X	353.1	253.95	FL140	14000 Ft	N36°41.807' E127°19.884'	026'



DEPARTURE ROUTE DESCRIPTION

RWY 02 L/R: Climb on Rwy heading until reaching 2000 feet or DME 6 whichever comes first, then LEFT LEFT inbound on R-290° and continue to climb to assigned altitude. Thence,...

RWY 20 L/R: Climb on Rwy heading until reaching 1500 ft or DME3 whichever comes first, then RIGHT Turn RIGHT inbound on R-270° and continue to climb to assigned altitude. Thence,...