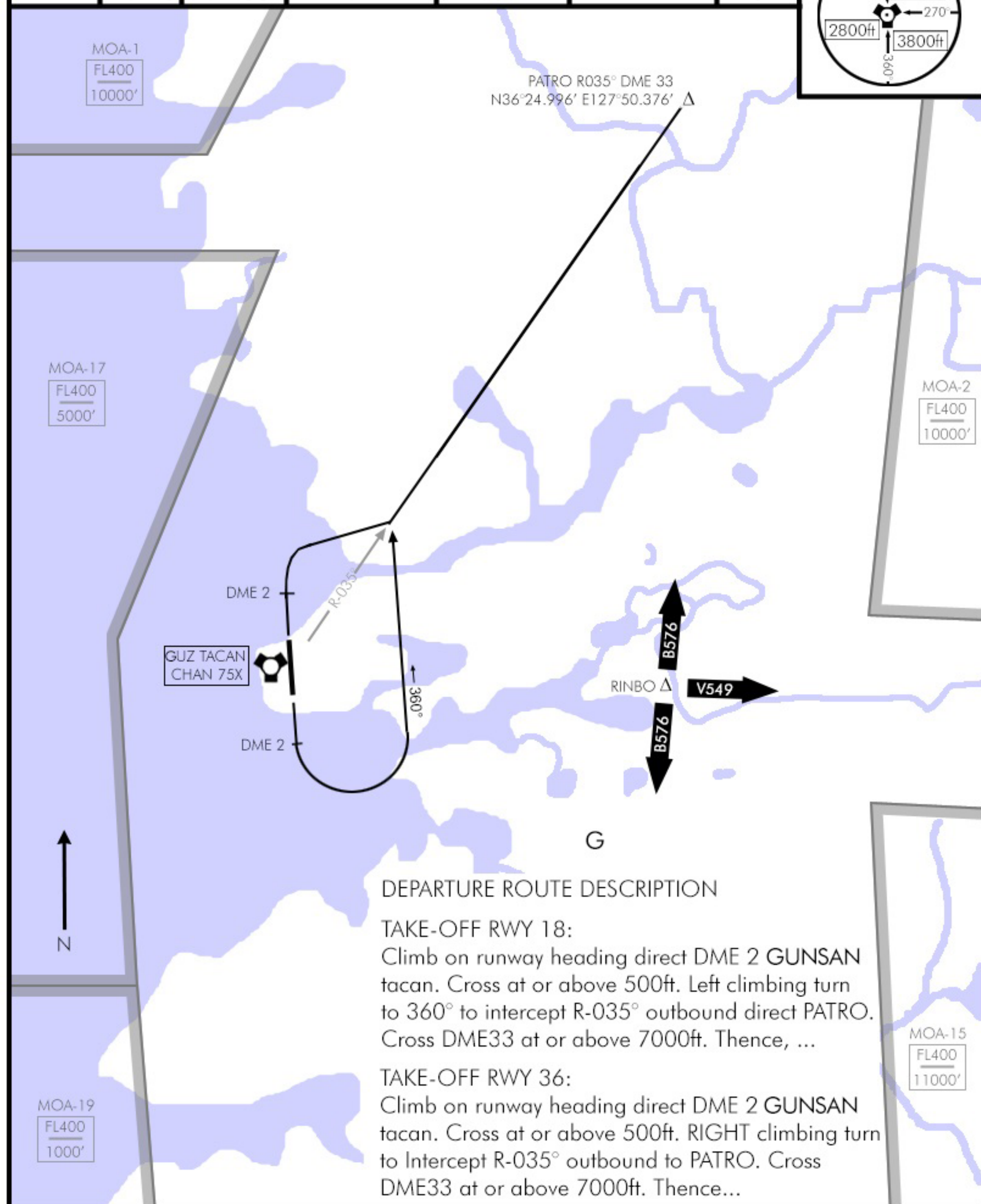
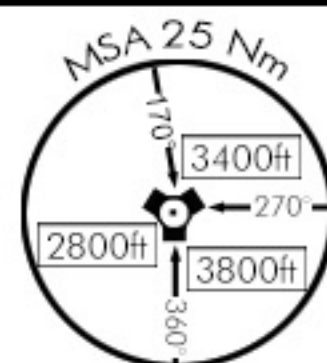


PATRO DEPARTURE

Update: 19MAY22

GUNSAN (RKJK)
SOUTH KOREA

TACAN:	TWR:	APP/DEP:	TRANS LEVEL:	TRANS ALT:	GPS:	ELEV:
075X	292.3	292.65	FL140	14000ft	N35°57.554' E127°24.492'	10'



DEPARTURE ROUTE DESCRIPTION

TAKE-OFF RWY 18:

Climb on runway heading direct DME 2 GUNSAN tacan. Cross at or above 500ft. Left climbing turn to 360° to intercept R-035° outbound direct PATRO. Cross DME33 at or above 7000ft. Thence, ...

TAKE-OFF RWY 36:

Climb on runway heading direct DME 2 GUNSAN tacan. Cross at or above 500ft. RIGHT climbing turn to Intercept R-035° outbound to PATRO. Cross DME33 at or above 7000ft. Thence...

PATRO DEPARTURE

NOT FOR REAL NAVIGATION - FALCON 4 BMS ONLY

GUNSAN (RKJK)
SOUTH KOREA