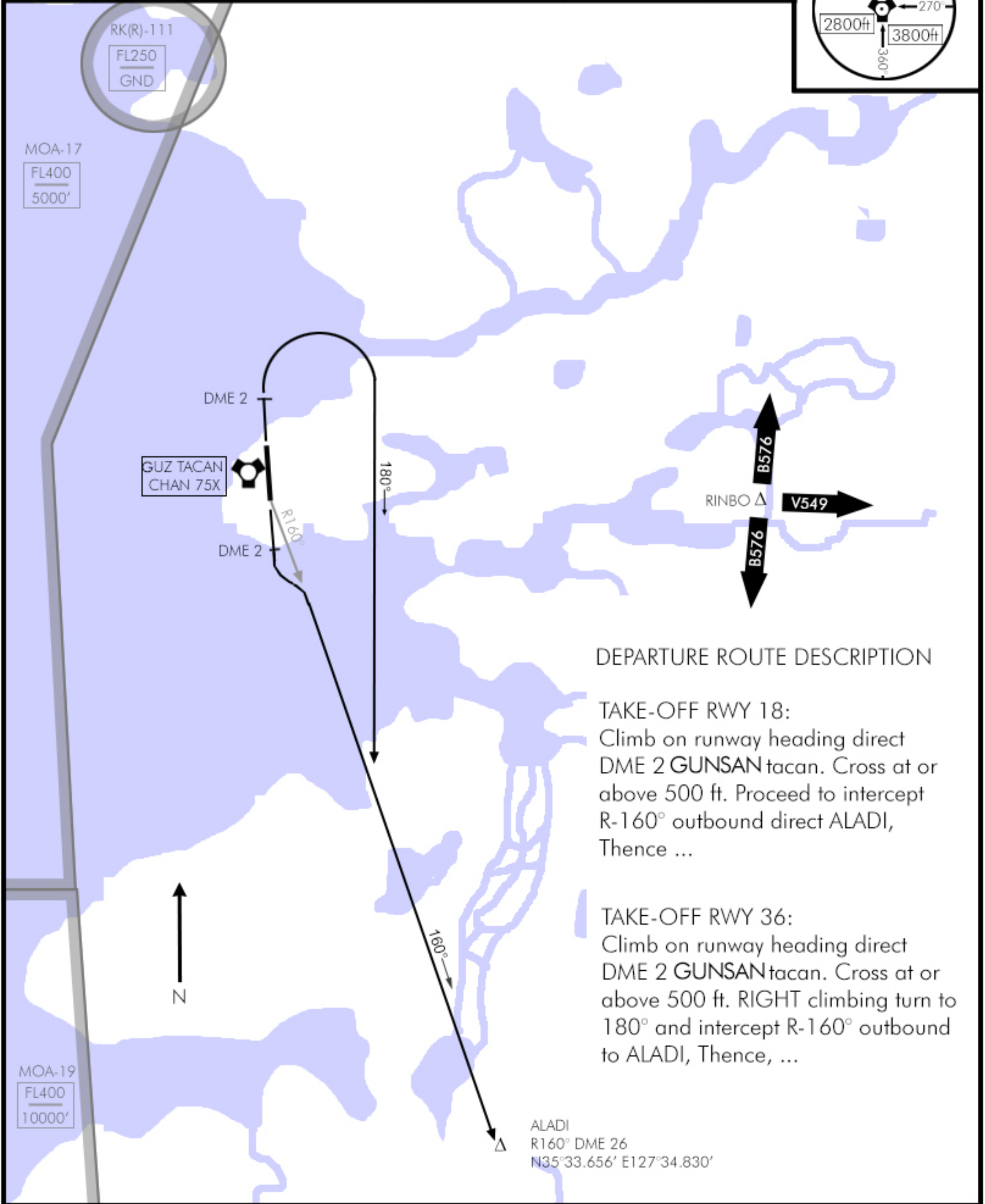
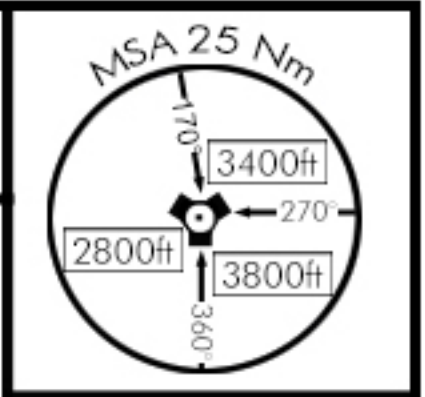


TACAN:	TWR:	APP/DEP:	TRANS LEVEL:	TRANS ALT:	GPS:	ELEV:
075X	292.3	292.65	FL140	14000ft	N35°57.554' E127°25.38'	10'



DEPARTURE ROUTE DESCRIPTION

TAKE-OFF RWY 18:
Climb on runway heading direct DME 2 GUNSAN tacan. Cross at or above 500 ft. Proceed to intercept R-160° outbound direct ALADI, Thence ...

TAKE-OFF RWY 36:
Climb on runway heading direct DME 2 GUNSAN tacan. Cross at or above 500 ft. RIGHT climbing turn to 180° and intercept R-160° outbound to ALADI, Thence, ...