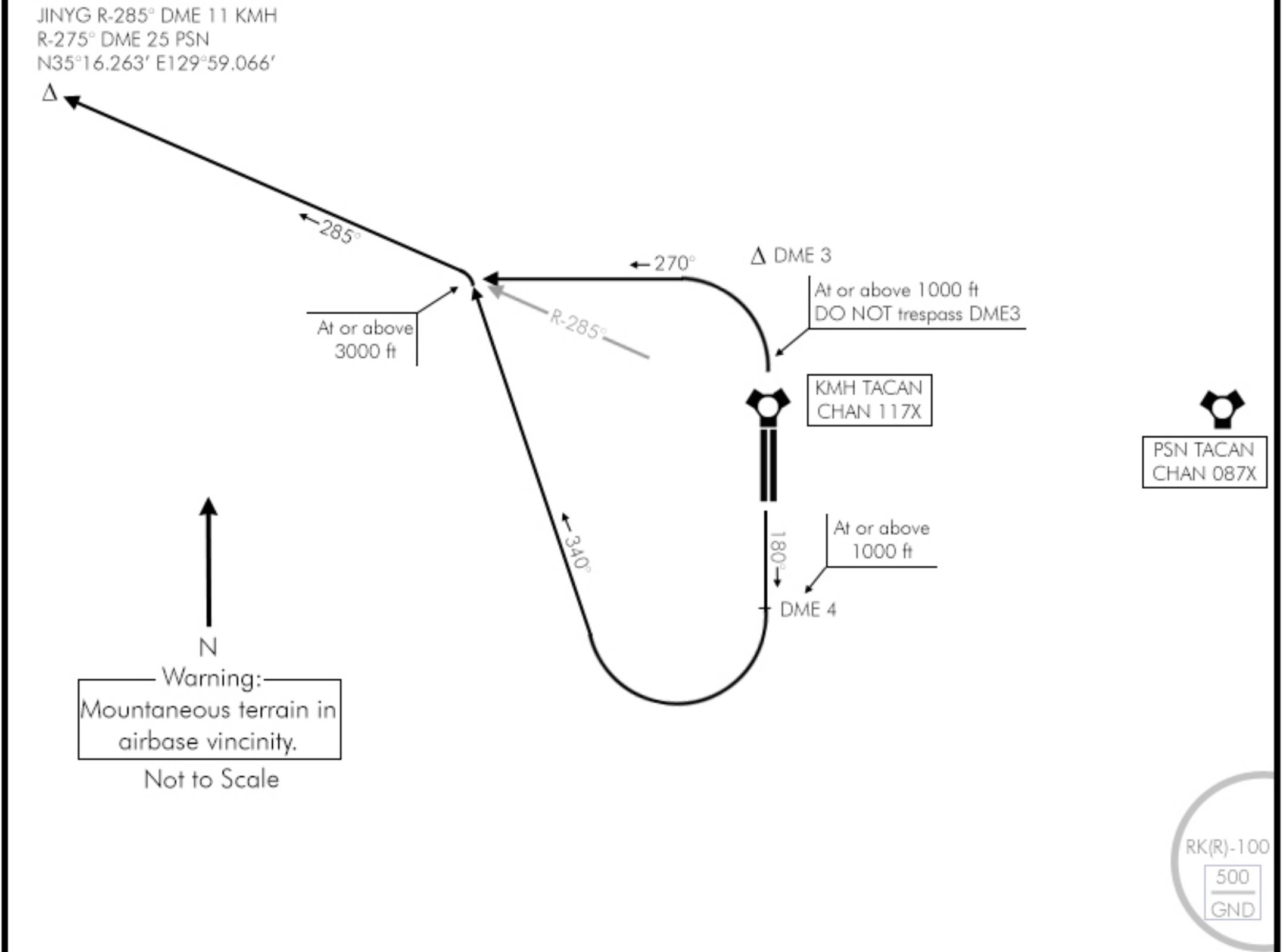
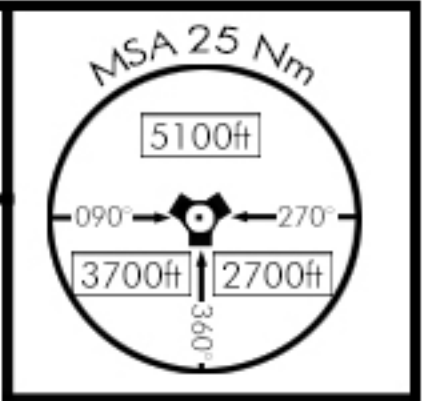


TACAN:	TWR:	APP/DEP:	TRANS ALT:	TRANS LVL:	GPS:	ELEV:
117X	233.3	225.1	14000ft	FL140	N35°13.558' E130°12.398'	039'



DEPARTURE ROUTE DESCRIPTION

- NAKDONG 3A SOUTH: Climb on RWY heading until reaching DME 4 or 1000 ft whichever comes first. Then RIGHT climbing turn to heading 340° until intercepting R-285° outbound KMH. Cross at no less than 3000 ft. Proceed via R-285° KMH to JINYG. Cross at assigned altitude. Thence...

NAKDONG 3A NORTH: Climb on RWY heading until reaching 1000 ft. Then LEFT climbing turn heading 270° to intercept R-285° outbound KMH. Cross at no less than 3000 ft. Proceed via R-285° KMH to JINYG. Cross at assigned altitude. Thence...