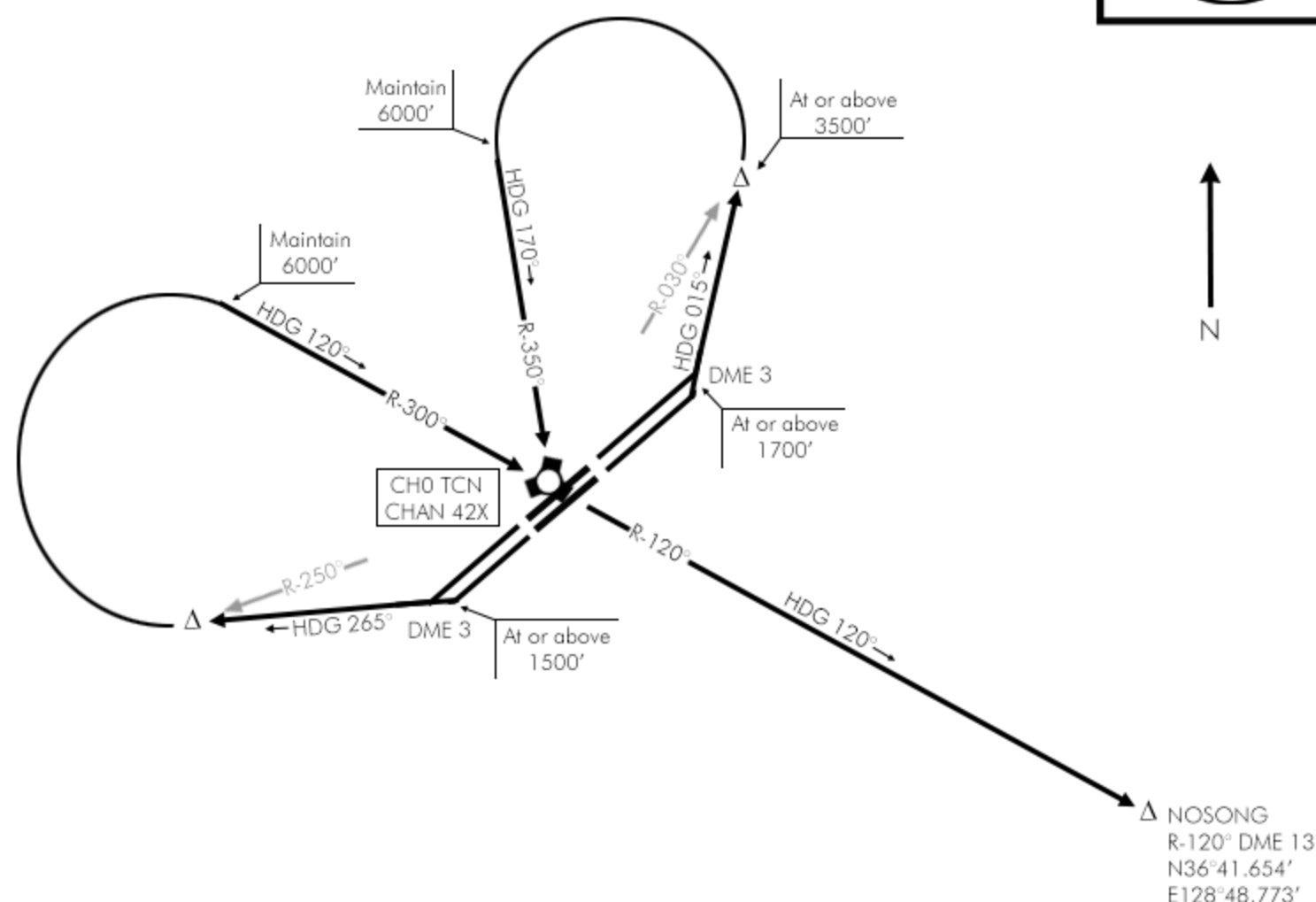
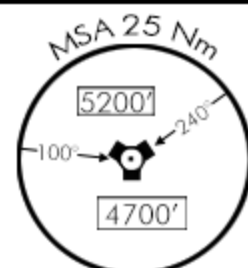


TACAN:	TWR:	APP/DEP:	TRANS LEVEL:	TRANS ALT:	GPS:	ELEV:
042X	250.2	292.9	FL140	14000ft	N36°48.100' E128°36.314'	187'



DEPARTURE ROUTE DESCRIPTION

TAKE-OFF RWY 06 L&R: Climb to 1700 feet on Rwy heading until reaching DME 3. Turn LEFT heading 015° until crossing R-030° Chongju tacan. Cross at or above 3500 feet. Turn LEFT to intercept R-350° inbound Chongju tacan. Maintain 6000 feet until overhead Chongju Track R-120° outbound Chongju tacan until NOSONG and climb to assigned altitude Thence...

TAKE-OFF RWY 24 L&R: Climb to 1500 feet on Rwy heading until reaching DME 3. Turn RIGHT heading 265° until crossing R-250° Chongju tacan. Turn RIGHT to intercept R-300° inbound tacan and maintain 6000 feet until overhead Chongju. Track R-120° outbound Chongju tacan until NOSONG and climb to assigned altitude. Thence...