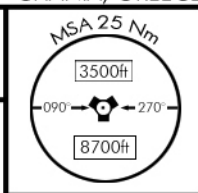


## AIRPORT DIAGRAM

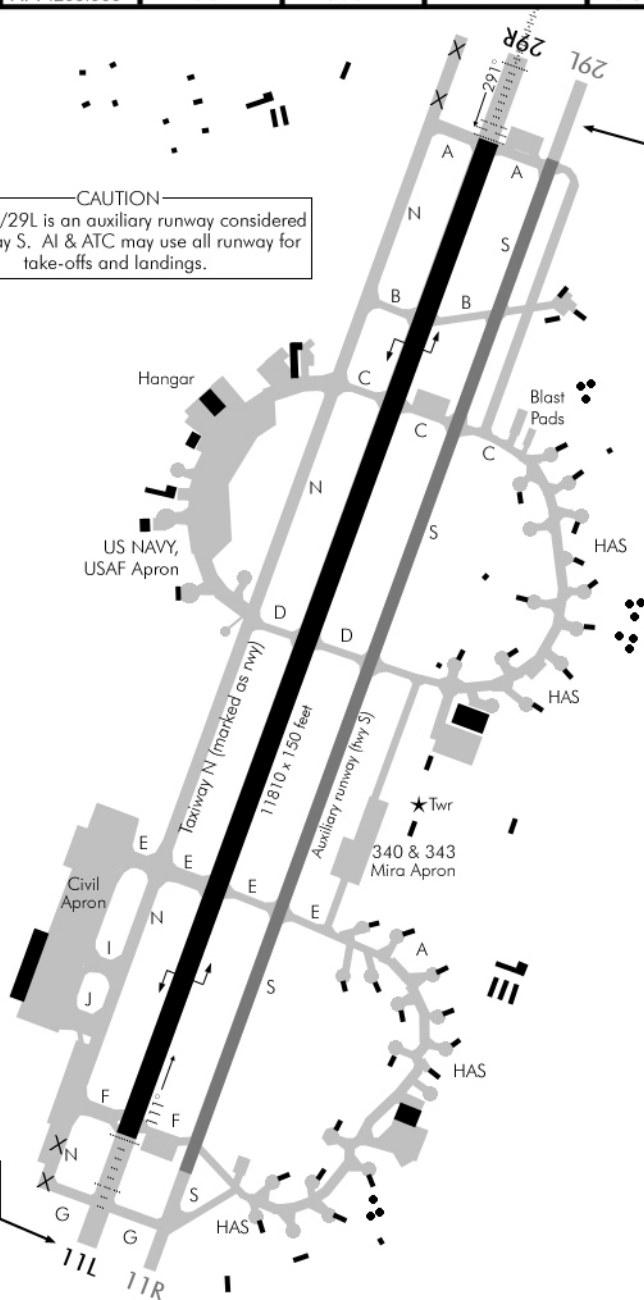
Date: 21 April 2019

TACAN: 049X	ATIS:130.150 GND:260.400 TWR:363.000 APP:268.900	TRANS LVL: FL 130	TRANS ALT: 11000 ft	GPS: N35°32.269' E24°56.665'	ELEV: 490'
----------------	---	----------------------	------------------------	------------------------------------	---------------



## CAUTION

RWY 11R/29L is an auxiliary runway considered as taxiway S. AI & ATC may use all runway for take-offs and landings.



© COMBATSIM CHECKLISTS 2013