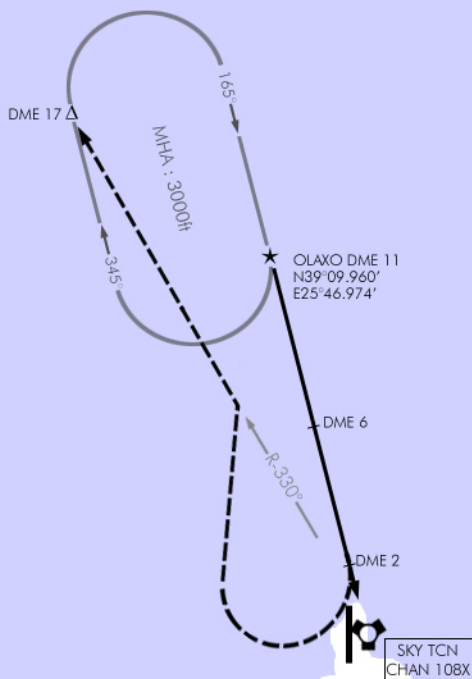


Date: 21 April 2019

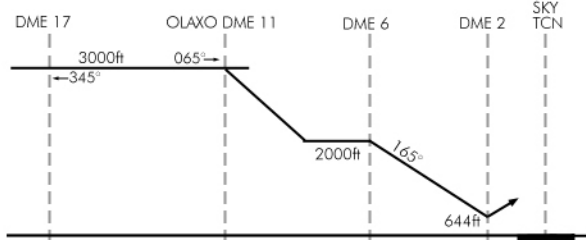
TACAN RWY 18

TACAN: 108X	ATIS: 132.35 APP: 360.25 TWR: 362.60	TCN RAD (HDG): 345° (165°)	TCN DA(H): 644' (600')	GPS: N38°58.106' E25°48.917'	ELEV: 44'	
MISSED APPROACH: Turn RIGHT, climbing to track 010° to intercept R-330° outbound SKY tacan to DME 17. Turn RIGHT to hold as published at 3000 feet.					HIALS PAPI	



EMERG SAFE ALT 100 NM: 11100ft

Transition Level : FL 130 - Transition Altitude : 11000ft



Minima (CAT D):

TCN(DA) at DME 2: 644'
 TCN(DH) at DME 2: 600'
 Vis: 300-1600m *
 CIRCLING:
 DA: 944' - DH: 900'
 Vis: 600-2000m

*When ALS inop, increase vis to 2000m