
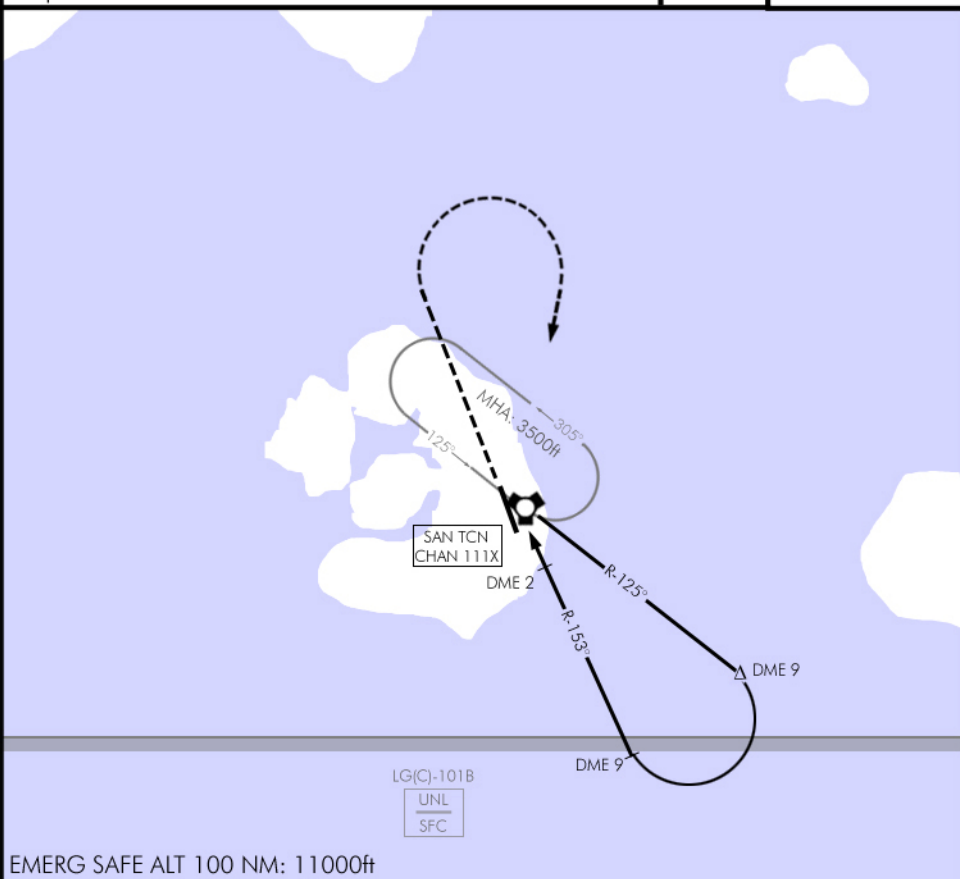


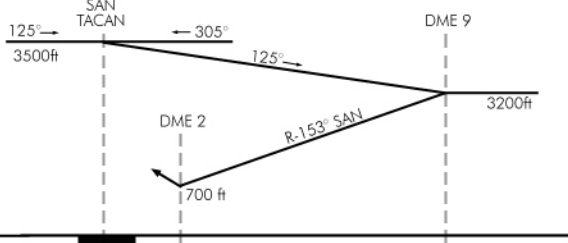
TACAN RWY 34R

Date: 21 April 2019

TACAN: 111X	ATIS:131.35 APP:265.00 TWR:363.55	TCN RAD (hdg): R-153° (333°)	TCN DA(H): 700' (573'AGL)	GPS: N36°23.232' E26°23.359'	ELEV: 127'	MSA 25 Nm  3400ft
MISSED APPROACH: Climb on R-330° to 2500 feet, then turn RIGHT direct to SAN TACAN. Climb to 3500 feet and hold as published.					HIALS PAPI (3°) ---	



Transition Level : FL 130 - Transition Altitude : 11000ft



Minima (CAT D):

TCN(DA) at DME 2: 700'
TCN(DH) at DME 2: 573'
VIS: 3600mCIRCLING: DA: 800'
DH: 673'
VIS: 4400m
Circling not authorized
WEST of RWY 16/34