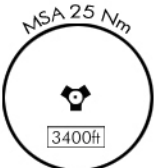
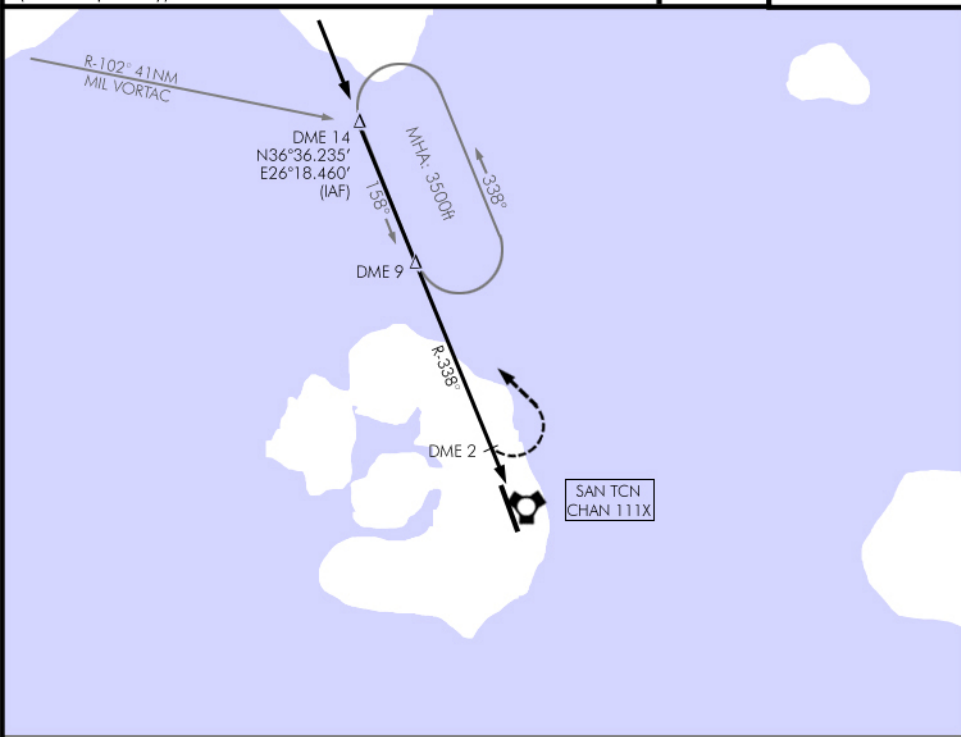


TACAN RWY 16L

Date: 21 April 2019

TACAN: 111X	ATIS:131.35 APP:265.00 TWR:363.55	TCN RAD (hdg): R-338° (158°)	TCN DA(H): 827' (700'AGL)	GPS: N36°23.232' E26°23.359'	ELEV: 127'	
MISSED APPROACH: Climbing LEFT turn to 3500' to intercept R-338° outbound SAN Tacan 111X to IAF, hold as published (teardrop entry)					Nil PAPI (3°)	

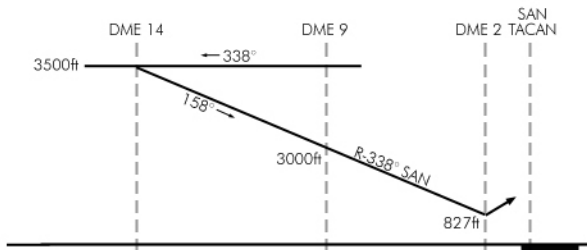


LG(C)-101B

UNL
SFC

EMERG SAFE ALT 100 NM: 11000ft

Transition Level : FL 130 - Transition Altitude : 11000ft



Minima (CAT D):

TCN(DA) at DME 2: 827'
TCN(DH) at DME 2: 700'
Ceiling: 700' VIS: 3600m

CIRCLING: DA: 927'
DH: 800'
Ceiling: 800' VIS: 4400m
Circling not authorized
WEST of RWY 16/34