

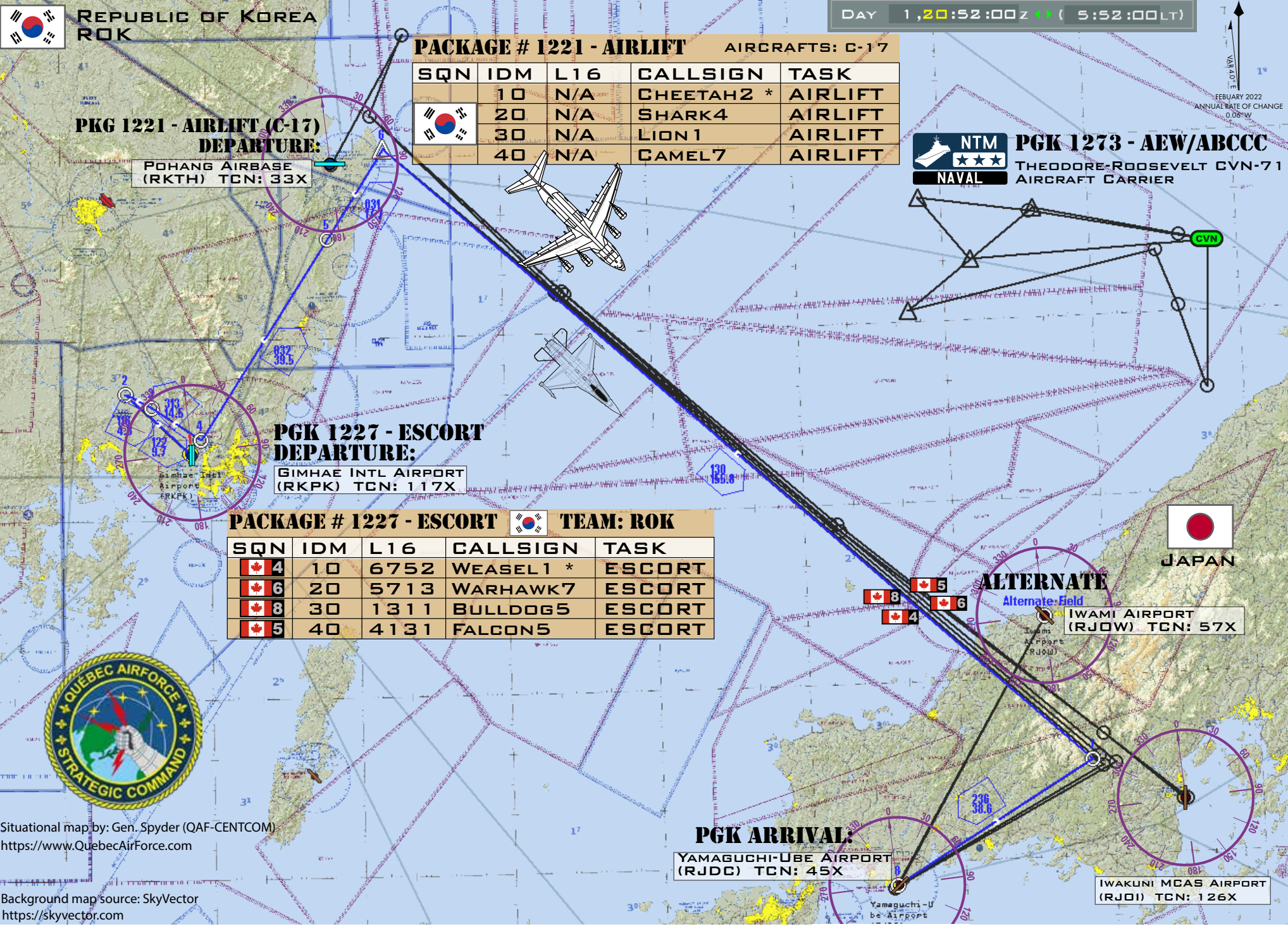


MISSION: C4\_LACHUTE\_16P  
SORTIE # 241

«Dust»

# SITUATION MAP

DAY 1, 20:52:00Z ( 5:52:00LT)



REPUBLIC OF KOREA  
ROK

**PKG 1221 - AIRLIFT (C-17)**  
**DEPARTURE:**  
POHANG AIRBASE  
(RKTH) TCN: 33X

**PACKAGE # 1221 - AIRLIFT** AIRCRAFTS: C-17

SQN	IDM	L16	CALLSIGN	TASK
	10	N/A	CHEETAH2 *	AIRLIFT
	20	N/A	SHARK4	AIRLIFT
	30	N/A	LION1	AIRLIFT
	40	N/A	CAMEL7	AIRLIFT

**NTM** **PGK 1273 - AEW/ABCCC**  
 **NAVAL** THEODORE ROOSEVELT CVN-71  
AIRCRAFT CARRIER

**PKG 1227 - ESCORT**  
**DEPARTURE:**  
GIMHAE INTL AIRPORT  
(RKPK) TCN: 117X

**PACKAGE # 1227 - ESCORT** **TEAM: ROK**

SQN	IDM	L16	CALLSIGN	TASK
4	10	6752	WEASEL1 *	ESCORT
6	20	5713	WARHAWK7	ESCORT
8	30	1311	BULLDOG5	ESCORT
5	40	4131	FALCON5	ESCORT

**ALTERNATE**  
Alternate-Field  
IWAMI AIRPORT  
(RJOW) TCN: 57X

**PKG ARRIVAL:**  
YAMAGUCHI-UBE AIRPORT  
(RJDC) TCN: 45X

IWAKUNI MCAS AIRPORT  
(RJOI) TCN: 126X



Situational map by: Gen. Spyder (QAF-CENTCOM)  
<https://www.QuebecAirForce.com>

Background map source: SkyVector  
<https://skyvector.com>