



MISSION: C5_DUSTING_12P

DATE: 2023-10-04

LISTE DES CIBLES ET ASSIGNATIONS

SORTIE # 118

<i>PPT#</i>	<i>Wpt#</i>	<i>Description</i>	<i>Victory</i>	<i>Pilot Assignment</i>
99	6	5th Infantry ArmyBase, Ammo Dump COORD GPS: N38° 30.466' E128° 51.569' Elev: 1506 ft	50 Pts	Mustang21
98	6	5th Infantry ArmyBase, Radar EW Station COORD GPS: N38° 30.367' E128° 51.369' Elev: 1506 ft		Mustang22
97	6	5th Infantry ArmyBase, Warehouse COORD GPS: N38° 30.505' E128° 51.628' Elev: 1506 ft		Mustang23
96	6	5th Infantry ArmyBase, Admin Building COORD GPS: N38° 30.534' E128° 51.586' Elev: 1506 ft		Mustang24
95	7	1st Infantry ArmyBase, Depot Complex COORD GPS: N38° 41.405' E129° 36.137' Elev: 1384 ft	50 pts	Satan51
94	7	1st Infantry ArmyBase, Ammo Dump COORD GPS: N38° 41.370' E129° 35.839' Elev: 1698 ft		Satan52
93	7	1st Infantry ArmyBase, Admin Building COORD GPS: N38° 41.176' E129° 35.857' Elev: 1698 ft		Satan53
92	7	1st Infantry ArmyBase, Depot Shelter COORD GPS: N38° 41.226' E129° 36.116' Elev: 1615 ft		Satan54

Note¹: Les cibles principales de 50 points chacune pour les conditions de victoires aux PPT #99 et #95.
Ces cibles sont fixes.

Note²: La USAF vous a désigné un armement Air-Sol pour votre cible: 2x GBU-24 H/E (High Explosive).

En cas de la perte ou le dysfonctionnement de votre Flight Leader ou de celui du second flight « AIR STRIKE », veuillez prévoir un second pilote en « back-up » pour détruire nos deux cibles principales pour obtenir 100 points.

Bon vol à tous!



Jim «Spyder» Beattie, commanding officer
2023-10-04 / CONFIDENTIAL STRATEGIC AIR COMMAND BRIEFING / 101 ECV SQUADRONS
www.QuebecAirForce.com

KTO BMS

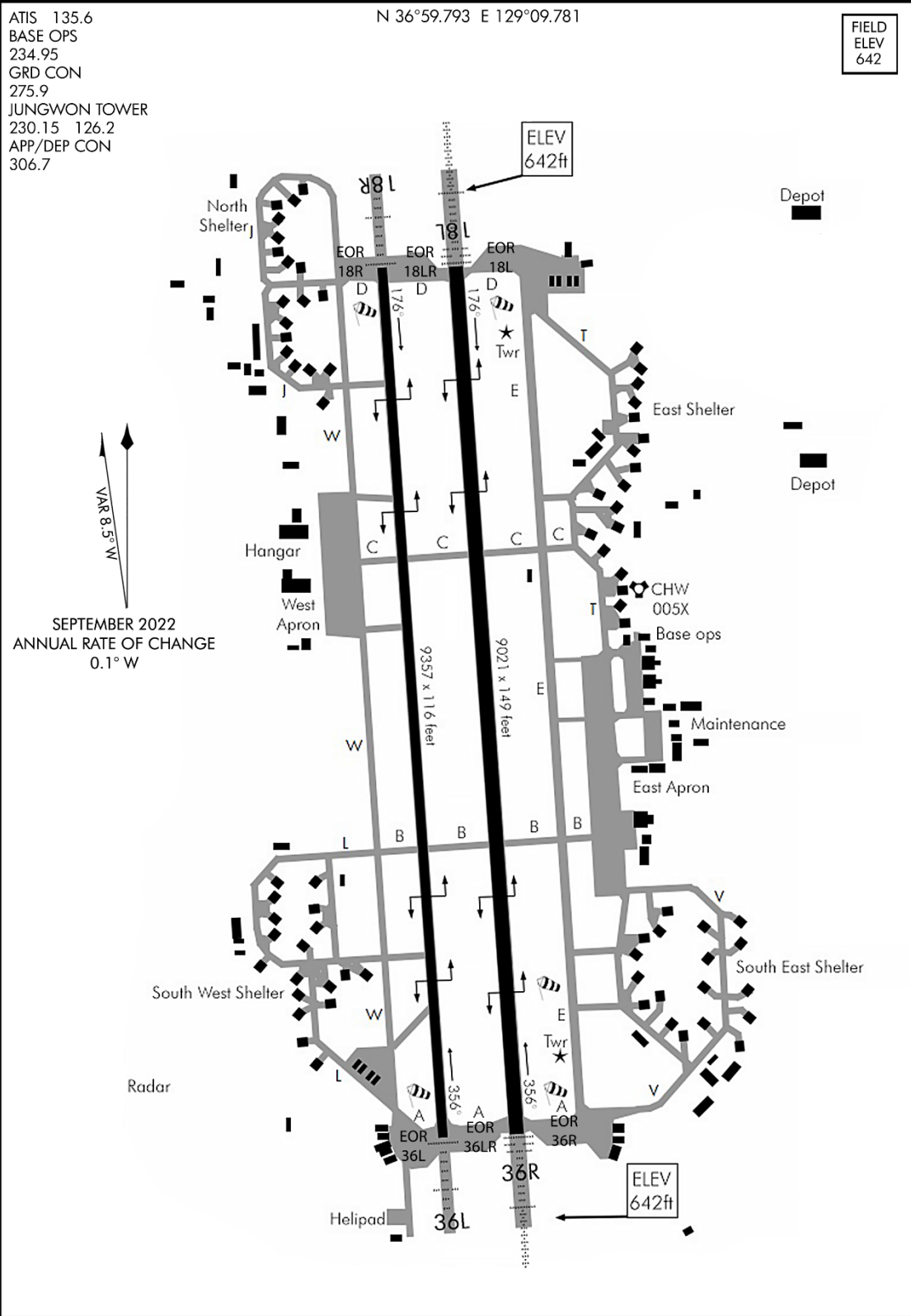
AIRPORT DIAGRAM

JUNGWON (RKTJ)
CHUNGJU, SOUTH KOREA

ATIS 135.6
BASE OPS
234.95
GRD CON
275.9
JUNGWON TOWER
230.15 126.2
APP/DEP CON
306.7

N 36°59.793 E 129°09.781

FIELD
ELEV
642



AIRPORT DIAGRAM

NOT FOR REAL NAVIGATION - FALCON 4 BMS ONLY

Updated: 16NOV22

GHUNGJU, SOUTH KOREA
JUNGWON (RKTJ)

© BENCHMARK SIMS

YANGYANG, SOUTH KOREA

ILS RWY 33

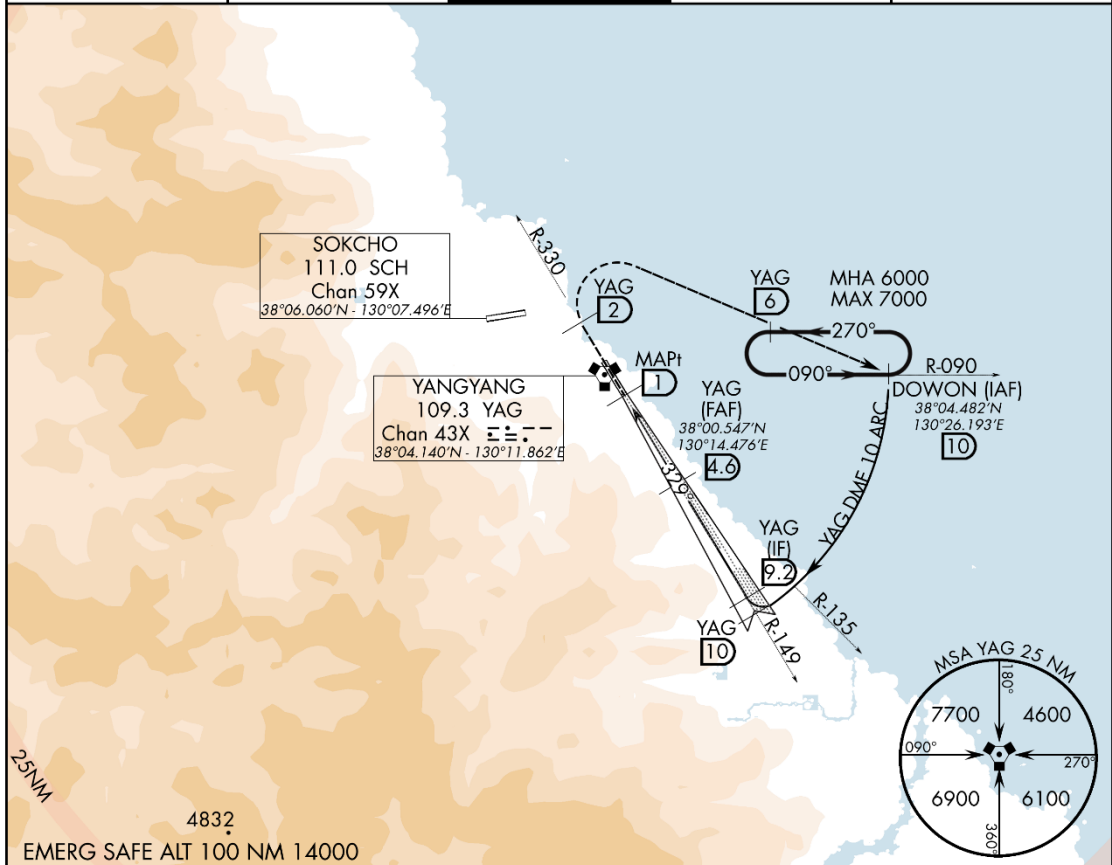
YANGYANG (RKNY)

VORTAC YAG 109.3 Chan 43X	APCH CRS 329°	Rwy ldg 15,000	TDZE 44	Arpt Elev 44
---------------------------------	------------------	-------------------	------------	-----------------

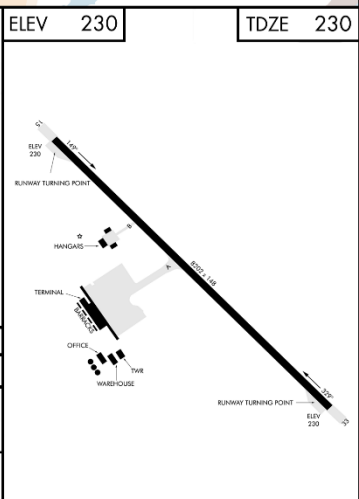
V * Timing not authorized for defining MAPt.
 ** Circling not authorized west of RWY 15-33, area on between R-150 and R-315 YAG and area beyond DME6 of between R-315 and R-360 YAG.

† MISSED APPROACH: Climb straight on YAG R 330 to DME2. Then turn right to DOWON to 6000. Hold as published and contact ATC for instructions.

ATIS 128.825	APP/DEP 241.6	TOWER 240.35 118.85	GND 280.125	BASE OPS XXX.XXX
-----------------	------------------	------------------------	----------------	---------------------



CATEGORY	C	D	E
S-ILS-33	430' (420' AGL) Vis: 200ft-800m	430' (420' AGL) Vis: 200ft-800m	430' (420' AGL) Vis: 200ft-800m
C CIRCLING **	830' (820' AGL) Vis: 200ft-1600m	830' (820' AGL) Vis: 200ft-1600m	830' (820' AGL) Vis: 200ft-1600m



YANGYANG, SOUTH KOREA

38°04.150'N - 130°12.231'E

YANGYANG (RKNY)

ILS RWY 33

NOT FOR REAL NAVIGATION - FALCON 4 BMS ONLY